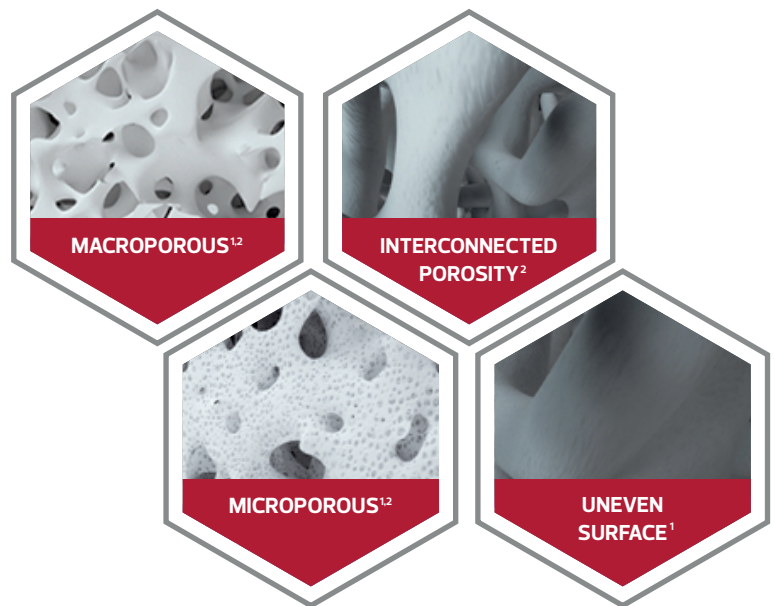


# TriOSS®

Monophasic osteoconductive scaffold  
 that favors bone regeneration

**TriOSS®** is a synthetic resorbable bone substitute. Intended for bony voids that are not intrinsic to the stability of the bone structure. **TriOSS®** is used in Orthopaedic, Traumatology, dental surgery and spine surgery.



## SAFETY

The material is synthetic, does not contain animal or human tissues or derivatives.

Absence of immune infectious response or disease transmission.

## QUALITY

Developed under the rigorous standards and quality control of the medical device industry. Bioceramed is a ISO 13485 certified company, and our products are CE marked.

## CHARACTERISTICS

**TriOSS®** is composed entirely of  $\beta$ -Tricalcium Phosphate ( $\beta$ -TCP), favouring a faster resorption rate.

**TriOSS®** is a porous scaffold with interconnected porosity, enhancing the vascularization and colonization of the graft by the bone cells.

**TriOSS®** is available in various granules, blocks and wedges sizes.

## OTHER BENEFITS

**TriOSS®** is radiopaque, which allows the observation of the healing process.

The use of synthetic grafts avoids the autograft procedure thus minimizing the complications and morbidities associated and reducing the surgery time.

1. TANG, Zhurong et al. The material and biological characteristics of osteoinductive calcium phosphate ceramics. Regenerative biomaterials, v.5, n.1, p. 43-59, 2017.  
 2. BOULER, Jean-Michel et al. Biphasic calcium phosphate ceramics for bone reconstruction: A review of biological response. Acta biomaterialia, v.53, p. 1-12, 2017.

# KEY APPLICATIONS



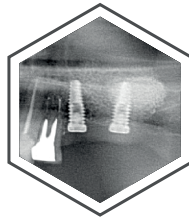
## SPINE SURGERY

Interbody fusion  
(e.g. cages)



## ONCOLOGY

Filling of bone  
curettage



## DENTAL IMPLANTOLOGY

Sinus lift  
Alveolar ridge  
augmentation



## TRAUMATOLOGY

Fractures, gaps or skeletal system  
defects (extremities, long bone,  
pelvis, among others.)



## ORTHOPAEDICS

Knee osteotomy  
Non-unions

# References

REF.	DESCRIPTION
------	-------------

TrB0011	TriOSS® Blocks 10x10x5 mm – 1 uni.
TrB0013	TriOSS® Blocks 10x10x5 mm – 3 uni.
TrB0015	TriOSS® Blocks 10x10x5 mm – 5 uni.
TrB0021	TriOSS® Blocks 10x30x5 mm – 1 uni.
TrB0023	TriOSS® Blocks 10x30x5 mm – 3 uni.
TrB0025	TriOSS® Blocks 10x30x5 mm – 5 uni.
TrB0031	TriOSS® Blocks 10x10x10 mm – 1 uni.
TrB0033	TriOSS® Blocks 10x10x10 mm – 3 uni.
TrB0035	TriOSS® Blocks 10x10x10 mm – 5 uni.
TrB0041	TriOSS® Blocks 10x10x20 mm – 1 uni.
TrB0043	TriOSS® Blocks 10x10x20 mm – 3 uni.
TrB0045	TriOSS® Blocks 10x10x20 mm – 5 uni.
TrB0051	TriOSS® Blocks 10x30x10 mm – 1 uni.
TrB0053	TriOSS® Blocks 10x30x10 mm – 3 uni.
TrB0055	TriOSS® Blocks 10x30x10 mm – 5 uni.
TrB0061	TriOSS® Blocks 15x15x20 mm – 1 uni.
TrB0063	TriOSS® Blocks 15x15x20 mm – 3 uni.
TrB0065	TriOSS® Blocks 15x15x20 mm – 5 uni.
TrB0071	TriOSS® Blocks 15x15x30 mm – 1 uni.
TrB0073	TriOSS® Blocks 15x15x30 mm – 3 uni.
TrB0075	TriOSS® Blocks 15x15x30 mm – 5 uni.
TrG0105	TriOSS® Irregular granules 0,5–1mm – 0,5g

REF.	DESCRIPTION
------	-------------

TrG0110	TriOSS® Irregular granules 0,5–1 mm – 1g
TrG0120	TriOSS® Irregular granules 0,5–1 mm – 2g
TrG0205	TriOSS® Irregular granules 1–2 mm – 0,5g
TrG0210	TriOSS® Irregular granules 1–2 mm – 1g
TrG0215	TriOSS® Irregular granules 1–2 mm – 2g
TrG03025	TriOSS® Irregular granules 2–4 mm – 2,5cc
TrG0305	TriOSS® Irregular granules 2–4 mm – 5cc
TrG0310	TriOSS® Irregular granules 2–4 mm – 10cc
TrG0315	TriOSS® Irregular granules 2–4 mm – 15cc
TrG0320	TriOSS® Irregular granules 2–4 mm – 20cc
TrG0330	TriOSS® Irregular granules 2–4 mm – 30cc
TrG04025	TriOSS® Irregular granules 4–6 mm – 2,5cc
TrG0405	TriOSS® Irregular granules 4–6 mm – 5cc
TrG0410	TriOSS® Irregular granules 4–6 mm – 10cc
TrG0415	TriOSS® Irregular granules 4–6 mm – 15cc
TrG0420	TriOSS® Irregular granules 4–6 mm – 20cc
TrG0430	TriOSS® Irregular granules 4–6mm – 30cc
TrC0011	TriOSS® Wedges 20x15x8 mm – 1 uni.
TrC0021	TriOSS® Wedges 20x15x10 mm – 1 uni.
TrC0031	TriOSS® Wedges 20x15x12 mm – 1 uni.
TrC0041	TriOSS® Wedges 20x15x14 mm – 1 uni.

### Address

José Gomes Ferreira street, 1, Arm D  
2660–360 São Julião do Tojal  
Loures – Portugal

### Contact

info@bioceramed.com  
Tel: (+351) 210 966 988

